

# MORE MESA PRESERVATION COALITION



## MMPC e-Update

October 2015

### [Any News About What's Happening With Potential Development?](#)



*For those of you who might have missed [last month's Update](#), the big news is that More Mesa's owner has taken the initial steps in the development approval process. Specifically, in late July their local representatives tried to get the Planning Commission to open the development envelope.*

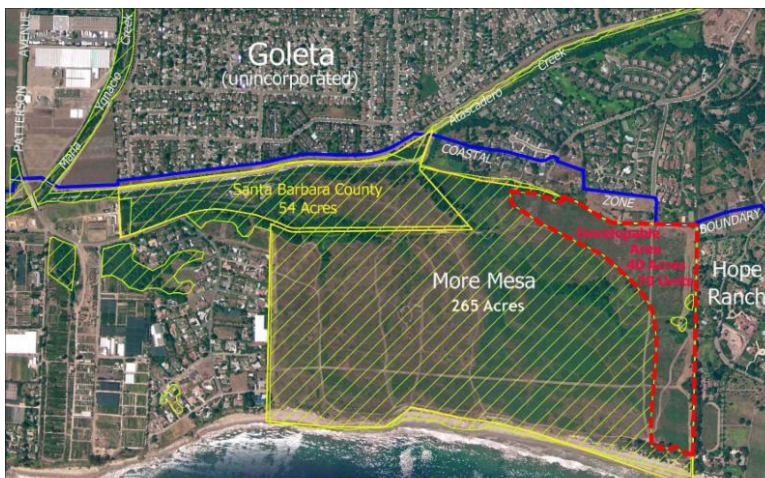
*And recently, we heard informally that the same group has again approached the County with a request to allow more houses to be built within the [previously approved](#) legal development envelope. We understand that the County referred them to the Goleta Community Plan, which contains a [special More Mesa section](#) specifying the 70 unit limit within the legal envelope and the process for changing the development envelope. Long time supporters may remember that the previous owner started that very long process and abandoned it within a year.*

### [How You Can Help ...](#)

#### MMPC Gives Talks

Throughout the 15 years we have been in existence, MMPC has given dozens of talks and presentations to members of our community. We have found talks to be an effective way to "spread the word" about this magic place and to ensure that it survives in tact for the enjoyment of our entire community.

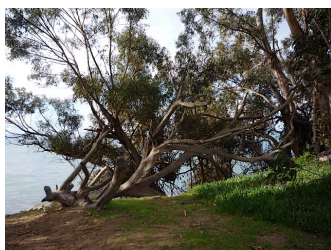
We have presented to fraternal, religious and environmental organizations.



as well as clubs, homeowners associations and retiree groups. If you belong to any organization that might be interested in hearing about More Mesa, please contact us at [mmpc@moremesa.org](mailto:mmpc@moremesa.org). Presentations are tailored to meet the group's interests. We look forward to hearing from you!

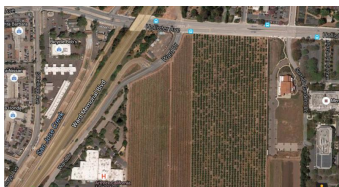
Thanks so much!

**Valerie Olson**  
**President, MMPC**



**Coastal Eucalyptus ... Now In Even Greater Stress With Drought!**

**It is the mission of the More Mesa Preservation Coalition to preserve More Mesa, in its entirety, for all time. We've been at it since 2000.**



**Still Agriculture on the old Kellogg Farm!**



**Legal Development Envelope in Red**

**We have spoken with the Planning Commission, Planning Staff and a member of the Board of Supervisors about the integrity of the original limits and the need to resist any modification of that earlier Goleta Community Plan.**

**So the early skirmishes have begun and we can expect further development efforts to pick up soon. We will keep you posted and call on you to help us when that time comes.**

*Thank You*

**Ask The President**

**Q: How is More Mesa affected by the new Eastern Goleta Valley Community Plan; a plan currently in review by the Board of Supervisors?**

**A: The special section on More Mesa in the new plan will remain exactly the same as it is the 1993 version of the Goleta Community Plan for our area.**

However there are a few inaccuracies with regard to More Mesa in the Environmental Impact Report (EIR) for the new plan and we are working closely with the County to get these rectified.

**This Month on More Mesa ... The Drought/El Niño Cycle**

Last month we talked about the potential for an El Niño this coming winter. We promised more details on our web site, and in keeping with this promise, we have added a new "Ecology" section. El Niño information can be found in [Climate and Weather](#).

This month we call your attention to the Channel Islands National Park [Shore to Sea Lecture](#) Series for October 2015 and urge you to look at an excellent talk presented by Eric Boldt of the National Weather Service. Eric is the Warning Coordination Meteorologist for an area encompassing the counties of Los Angeles, Ventura, Santa Barbara and San Louis Obispo. In the lecture he covers all the effects of this record breaking drought; loss of trees, fire potential etc. and the prospects and outcomes for the coming El Niño ... the good, the bad and the dangerous. Eric also discusses how our community should be preparing for the event and the cyclic nature of drought and rain in our area.

**Any Advice for More Mesa? Do not walk under Eucalyptus trees in windy weather or after it rains!**

There is a reason they call Eucalyptus trees "widow makers." They are brittle and often break off branches or fall during wind-storms. We have always advised visitors to More Mesa to stay away from these trees when it is windy.

However, all our trees and especially Eucalyptus, are in a very weakened condition as a result of the drought. This means they will be much more likely to splinter and break after severe rain events.

be much more likely to splinter and break after severe rain events as well. Unhappily even our sturdy oaks, native to the area and generally adapted to droughts, are weakened and failing as well. The severity of this drought cannot be overemphasized.

For accurate, data driven weather information go to the [National Weather Service](#) for our area.

## [The Past - "King John", Prince or Villain](#)

Some in the Goleta Valley considered John More a prince among men. And local kids always gathered around him as he was an easy touch for a ride in his cart or a penny for candy. However not everyone agreed with them. Many of his neighbors truly disliked him; to them "he had a disposition as sweet as a raw olive and a tongue as barbed as a fish hook." Further his consummate zeal in maintaining the integrity of "his empire" made him a constant thorn in the side of one Mr. Florentine Kellogg.

Kellogg became a target for the thorn as a result of acquiring only 60 acres of the beloved More realm. The sale was necessitated when T. Wallace, John's brother, was forced to raise money for ousting squatters on his Sespe Ranch. Indeed the transaction was arranged a mere two weeks before T. Wallace, was [murdered](#) at Sespe. But, from the very moment "King John" purchased More Mesa two years later, he made it eminently clear that he resented Kellogg farming this small parcel inside the feudal domain of his martyred brother's ranch.

(Look for the conclusion of the Kellogg story in our next update. Information from "Goleta, The Good Land" by Walker Tompkins.)

More Mesa Preservation Coalition | | [mmpc@moremesa.org](mailto:mmpc@moremesa.org) |

### [Forward email](#)



This email was sent to [mmpc@moremesa.org](mailto:mmpc@moremesa.org) by [mmpc@moremesa.org](mailto:mmpc@moremesa.org) | [Update Profile/Email Address](#) | Rapid removal with [SafeUnsubscribe](#)<sup>™</sup> | [About our service provider](#).



More Mesa Preservation Coalition | P.O. Box 22557 | Santa Barbara | CA | 93121